



2024 Data Report for Second Fortune Lake, Iron County

Site ID: 360177

46.0772°N, 88.4265°W

The CLMP is brought to you by:



About this report:

This report is a summary of the data that have been collected through the Cooperative Lakes Monitoring Program. The contents have been customized for your lake. The first page is a summary of the Trophic Status Indicators of your lake (Secchi Disk Transparency, Chlorophyll-a, Spring Total Phosphorus, and Summer Total Phosphorus). Where data are available, they have been summarized for the most recent field season, five years prior to the most recent field season, and since the first year your lake has been enrolled in the program.

If you did not take 8 or more Secchi disk measurements or 4 or more chlorophyll measurements, there will not be summary data calculated for these parameters. These numbers of measurements are required to ensure that the results are indicative of overall summer conditions.

If you enrolled in Dissolved Oxygen/Temperature, the summary page will have a graph of one of the profiles taken during the late summer (typically August or September). If your lake stratifies, we will use a graph showing the earliest time of stratification, because identifying the timing of this condition and the depth at which it occurs is typically the most important use of dissolved oxygen measurements.

The back of the summary page will be an explanation of the Trophic Status Index and where your lake fits on that scale.

The rest of the report will be aquatic plant summaries, Score the Shore results, and larger graphs, including all Dissolved Oxygen/Temperature Profiles that you recorded. For Secchi Disk, Chlorophyll, and Phosphorus parameters, you need to have two years of data for a graph to make logical sense. Therefore if this is the first year you have enrolled in the CLMP, you will not receive a graph for these parameters.

Remember that some lakes see a lot of fluctuation in these parameters from year to year. Until you have eight years worth of data, consider all trends to be preliminary.

To learn more about the CLMP monitoring parameters or get definitions to unknown terms, check out the CLMP Manual, found at: https://micorps.net/wp-content/uploads/2021/03/CLMP-Manual-2019update2_2021.pdf

Thank you!

The CLMP leadership team would like to thank you for all of your efforts over the past year. The CLMP would not exist without dedicated and hardworking volunteers!

The CLMP Leadership Team is made of: Jo Latimore, Erick Elgin, Jean Roth, Tamara Lipsey, Mike Gallagher, Melissa DeSimone, and Paul Steen

Questions?

If you have questions on this report or believe that the tabulated data for your lake in this report are in error please contact:

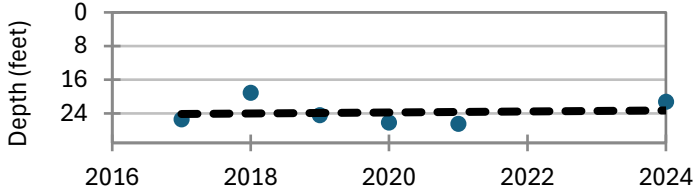
Paul Steen (psteen@hrwc.org), CLMP Data Analyst

Second Fortune Lake, Iron County 2024 CLMP Results



Secchi Disk Transparency (feet)

Year	# Readings	Min	Max	Average	Std. Dev	Carlson TSI
2024	9	18.0	26.5	21.2	3.0	33
2019-2023	40	14.5	43.0	25.7	7.0	30
2017-2018	20	16.5	38.0	22.3	5.7	33
2024 All CLMP Lakes	3348	0.5	85.0	11.7	6.2	43

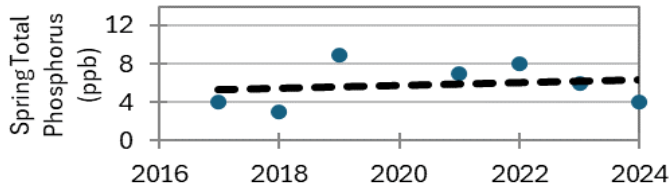


Chlorophyll-a (parts per billion)

Second Fortune Lake does not have Chlorophyll-a data available. Consider enrolling in this parameter next year. Chlorophyll-a is the green photosynthetic pigment in the cells of plants. The amount of algae in a lake can be estimated by measuring the chlorophyll-a concentration in the water. As an algal productivity indicator, chlorophyll-a is used to determine the trophic status of a lake.

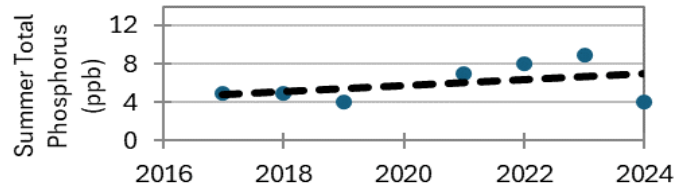
Spring Phosphorus (parts per billion)

Year	# Samples	Min	Max	Average	Std. Dev
2024	1	<5 T	<5 T	<5 T	NA
2019-2023	4	6.0	9.0	7.5	1.3
2017-2018	2	<=3 W	<5 T	3.5	0.7
2024 All CLMP Lakes	259	<= 5	140.0	14.3	39.7



Summer Phosphorus (parts per billion)

Year	# Samples	Min	Max	Average	Std. Dev	Carlson TSI
2024	1	<5 T	<5 T	<5 T	NA	27
2019-2023	4	<5 T	9.0	7.0	2.2	32
2017-2018	2	5.0	5.0	5.0	0.0	27
2024 All CLMP Lakes	200	<= 5	4.0	190.0	14.9	18



Dissolved Oxygen and Temperature Profile

This lake does not have recent (within 5 years) dissolved oxygen/water temperature data available. Consider enrolling in this parameter next year. Fish, insects, mollusks, and crustaceans need dissolved oxygen to live in water. By late summer, many lakes stratify, with cold anoxic water on the bottom and warm, oxygen rich water on the surface. Anoxic (oxygen-depleted) water occurring too close to the surface is a sign of nutrient enrichment. Understanding the pattern of dissolved oxygen and water temperature in a lake is important for assessing nutrient problems as well as the health of the biological community.

Summary

Average TSI	2024	2019-2023	2017-2018
Second Fortune Lake	30	31	30
All CLMP Lakes	41	42	40

With an average TSI score of 30 based on 2024 Secchi transparency and summer total phosphorus data, this lake is rated as oligotrophic.

There is too little data to assess long term trends. CLMP recommends at least eight consecutive years of monitoring to develop a strong data baseline.

* = Minimum # samples not met for average/median/TSI value

<1.0 = Chlorophyll-a: Sample value is less than limit of quantification (<1 ppb).

W= Value is less than the detection limit (<3 ppb) T = Value reported is less than the reporting limit (5 ppb)

Trophic Status Index Explained

In 1977, limnologist Dr. Robert Carlson developed a numerical scale (0-100) where the numbers indicate the level of nutrient enrichment. Using the proper equations, we can convert results from Summer Total Phosphorus, Secchi Depth, and Chlorophyll-a to this Trophic Status Index (TSI). The TSI numbers are furthermore grouped into general categories (oligotrophic, mesotrophic, eutrophic, and hypereutrophic), to quickly give us a way to understand the general nutrient level of any lake.

The tables below give the results-to-TSI conversions for the water quality data ranges normally seen in the CLMP. The formulas for this conversion can be found in the CLMP manual (link is on page 2 of this report).

Phosphorus (ppb)	TSI Value
<5	<27
6	30
8	34
10	37
12	40
15	43
18	46
21	48
24	50
32	54
36	56
42	58
48	60
>50	>61

Secchi Depth (ft)	TSI Value
>30	<28
25	31
20	34
15	38
12	42
10	44
7.5	48
6	52
4	57
<3	>61

Chlorophyll-a (ppb)	TSI Value
<1	<31
2	37
3	41
4	44
6	48
8	51
12	55
16	58
22	61
>22	>61

TSI for Second Fortune Lake in 2024	
Average	30
Secchi Disk	33
Summer TP	27
Chlorophyll-a	



^ Average
 ^ Secchi Transparency
 ^ Total Phosphorus

Oligotrophic: Generally deep and clear lakes with little aquatic plant or algae growth. These lakes maintain sufficient dissolved oxygen in the cool, deep-bottom waters during late summer to support cold water fish, such as trout and whitefish.

Mesotrophic: Lakes that fall between oligotrophic and eutrophic. Mid-ranged amounts of nutrients.

Eutrophic: Highly productive eutrophic lakes are generally shallow, turbid, and support abundant aquatic plant growth. In deep eutrophic lakes, the cool bottom waters usually contain little or no dissolved oxygen. Therefore, these lakes can only support warm water fish, such as bass and pike.

Hypereutrophic: A specialized category of eutrophic lakes. These lakes exhibit extremely high productivity, such as nuisance algae and weed growth.

Second Fortune, Iron County 2021 Exotic Aquatic Plant Watch Results



The Exotic Aquatic Plant Watch was conducted on Second Fortune Lake in 2021.

This survey involves sampling at multiple locations around the lake to detect new invaders, and document the extent of known invaders. While notes on other plant species may be recorded during the survey, the effort focuses on five highly invasive species: Eurasian watermilfoil (*Myriophyllum spicatum*), starry stonewort (*Nitellopsis obtusa*), curly-leaf pondweed (*Potamogeton crispus*), European Frogbit (*Hydrocharis morsus-ranae*), and Hydrilla (*Hydrilla verticillata*).

The table below summarizes the results of the 2021 Exotic Aquatic Plant Watch.

Second Fortune Lake, Iron County		
2021 Exotic Aquatic Plant Watch Results		
Survey Date(s): August 18		
<u>Species</u>	<u>Status</u>	<u>Comments</u>
Eurasian watermilfoil	not found	
Starry stonewort	not found	
Curly-leaf pondweed	not found	
European Frogbit	not found	
Hydrilla	not found	

Visit the MiCorps Data Exchange (<https://micorps.net>) or contact the lead volunteer on your lake for more details on the survey, including sampling locations, maps, and abundance information, and for information on past surveys.

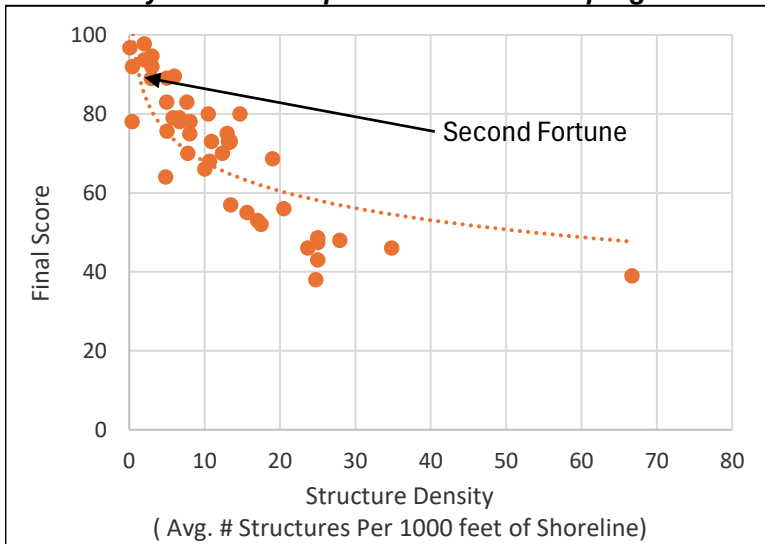
Second Fortune Lake, Iron County 2017 Score the Shore Results



The Score the Shore Habitat Assessment was conducted on Second Fortune Lake in 2017.

This assessment involves rating 1000 foot sections of shoreline for aquatic vegetation, shoreline vegetation, erosion, and erosion control practices (like sea walls). Each shoreline section is given three scores ranging from 0-100 for the categories of Littoral, Riparian, and Erosion Management. The three scores are averaged to produce a average section score. Then a total score is given to the entire lake by averaging all of the average section scores. A score of 0 indicates a shoreline that has been extremely disturbed by human impacts and no natural shoreline remains. A score of 100 indicates a shoreline that is nearly pristine.

How does your lake compare to others in the program?



Second Fortune Lake:	
Number of Sections:	10
Number of Structures:	53
Structure Density:	5.3
Final Score:	89

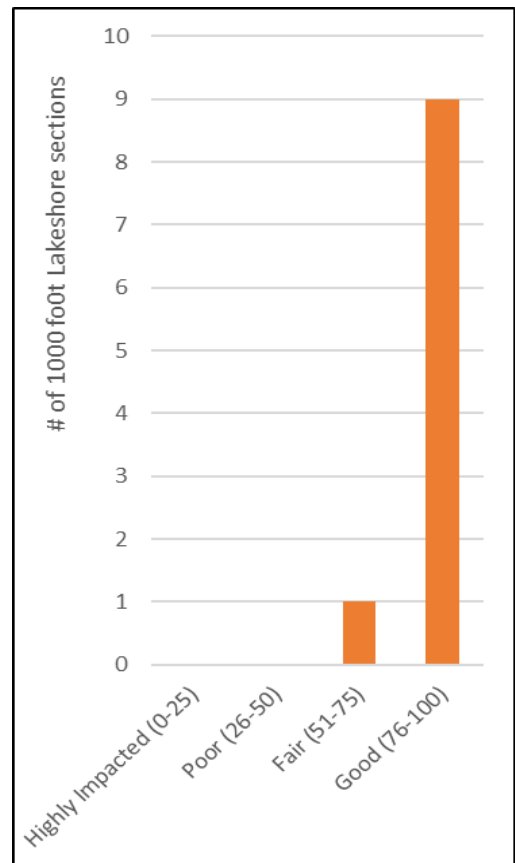
All 31 Participating Lakes from 2015-2017:	
Avg. Number of Sections:	16
Avg. Number of Structures:	233
Avg. Structure Density:	14.6
Avg. Final Score:	66

Analysis specific to Second Fortune Lake:

Overall, the lakeshore habitat of Second Fortune Lake is doing well and scored higher than average when compared to other lakes in the program. All of the 1000 foot sections scored either Fair or Good: 1 fair, and 9 good.

The lake sections scored high for erosion control meaning that there are a low amount of sea walls, rock rip-rap, and other shoreline erosion structures, and scored high in the riparian score, meaning that (in general) there were plentiful non-mowed areas providing a buffer between houses and roads and the lake.

The littoral zone was the weak point in Second Fortune Lake's habitat (scoring an average of 77). A score of 77 is good, but if residents of want to improve the overall shoreline quality, this is the component to concentrate on. To improve the littoral zone score, leave woody debris in place and allow native aquatic vegetation to grow in the shallow waters.



Aquatic Plants

Second Fortune Lake does not have aquatic plant data available.

Why is monitoring aquatic plants important?

A major component of the plant community in lakes is the large, leafy, rooted plants. Compared to the microscopic algae the rooted plants are large. Sometimes they are collectively called the “macrophytes” (“macro” meaning large and “phyte” meaning plant). These macrophytes are the plants that people sometimes complain about and refer to as lake weeds.

Far from being weeds, macrophytes or rooted aquatic plants are a natural and essential part of the lake, just as grasses, shrubs and trees are a natural part of the land. Their roots are a fabric for holding sediments in place, reducing erosion and maintaining bottom stability. They provide habitat for fish, including structure for food organisms, nursery areas, foraging and predator avoidance. Waterfowl, shore birds and aquatic mammals use plants to forage on and within, and as nesting materials and cover.

Though plants are important to the lake, overabundant plants can negatively affect fish populations, fishing and other recreational activities. Rooted plant populations increase in abundance as nutrient concentrations increase in the lake. As lakes become more eutrophic rooted plant populations increase. They are rarely a problem in oligotrophic lakes, only occasionally a problem in mesotrophic lakes, sometimes a problem in eutrophic lakes, and often a problem in hypereutrophic lakes.

However, sometimes a lake is invaded by an aquatic plant species that is not native to Michigan. In these cases, even nutrient poor oligotrophic lakes can be threatened. Some of these exotic plants, like Curly-leaf Pondweed, Eurasian Milfoil, Starry Stonewort, and Hydrilla can be extremely disruptive to the lake’s ecosystem and recreational activities.

To avoid a takeover by exotic plants, it is necessary to use Integrated Pest Management (IPM) strategies: monitoring, early detection, rapid response, maintenance control, and preventive management. For more information on these strategies, check out Integrated Pest Management for Nuisance Exotics in Michigan Inland Lakes (MSU Extension Water Quality Publication WQ-56, available at <https://micorps.net/lake-monitoring/clmp-documents/>)

The CLMP offers two parameters on aquatic plants. In the Exotic Aquatic Plant Watch, volunteers concentrate on monitoring and early detection of exotic invasive plants only. In Aquatic Plant Identification and Mapping, volunteers identify all native and non-native plants. In both parameters, volunteers create lake maps or use digital tools to georeference where the plants are found.

Score the Shore

Second Fortune Lake does not have Score the Shore results.

Why is the Score the Shore parameter important?

Healthy shorelines are an important and valuable component of the lake ecosystem. The shoreline area is a transition zone between water and land, and should be a very diverse environment that provides habitat for a great variety of fish, plants, birds, and other animals. A healthy shoreline area is also essential for maintaining water quality, slowing runoff, and limiting erosion.

However, Michigan's inland lake shorelines are threatened. Extensive development, often combined with poor shoreline management practices, can reduce or eliminate natural shoreline habitat and replace it with lawn and artificial erosion control such as sea walls and rock. As a result, shoreline vegetation is dramatically altered, habitat is lost, and water quality declines.

Therefore, in 2019 the MiCorps Cooperative Lakes Monitoring Program introduced a new monitoring program – Score the Shore – that enables volunteers to assess the quality of their lake's shoreline habitat.

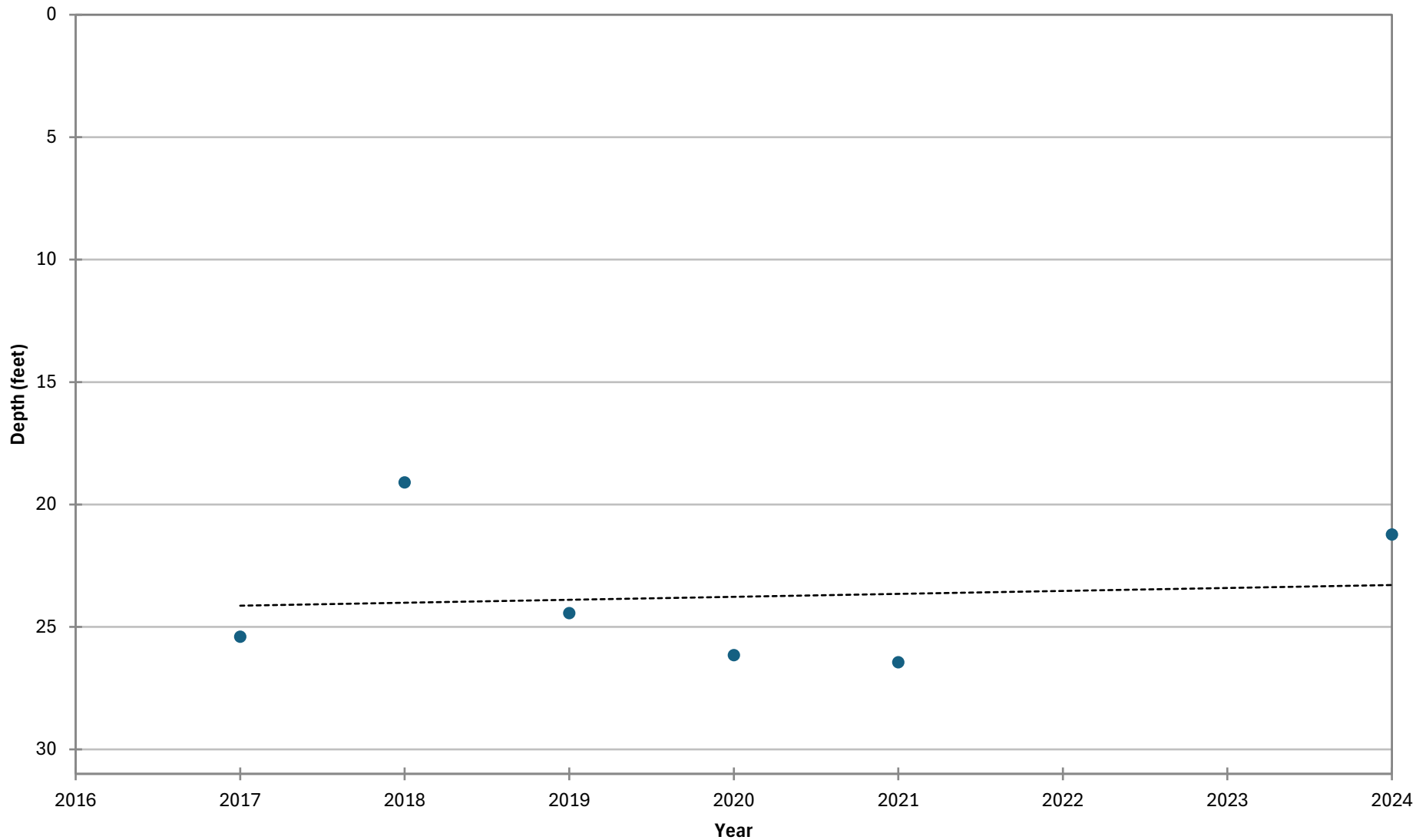
The information gathered during this assessment will allow lake communities to identify high-quality areas that can be protected, as well as opportunities for improvement. Score the Shore data, combined with educational resources describing the value of healthy shorelines and how to restore and maintain them, can be incorporated into lake management planning and used for educating lakefront property owners. The Michigan Natural Shoreline Partnership (MNSP) is a collaboration of agencies and professionals that promotes natural shoreline practices to protect Michigan's inland lakes. The MNSP website (www.mishorelinepartnership.org) includes materials and information that can be used in educational efforts. MNSP also offers training for professional educators and landscape contractors, and maintains a list of trained educators who may be available to speak to your community about natural shorelines.

Score the Shore data, just like all CLMP data, will also be available to any interested parties through the MiCorps Data Exchange (www.micorps.net). State agency staff and researchers regularly access CLMP data to better understand and manage Michigan's inland lakes.

Score the Shore is a descriptive process for assessing shoreline quality on Michigan's inland lakes. It is also a valuable educational tool. Score the Shore is not a regulatory program, nor is it intended to tell people what they can and cannot do on their property. The Michigan Department of Environmental Quality's Inland Lakes and Streams Program has responsibility for shoreline protection on public lakes. To learn about their shoreline protection program, including construction permitting and recommendations for shoreline management, visit www.mi.gov/deqinlandlakes.

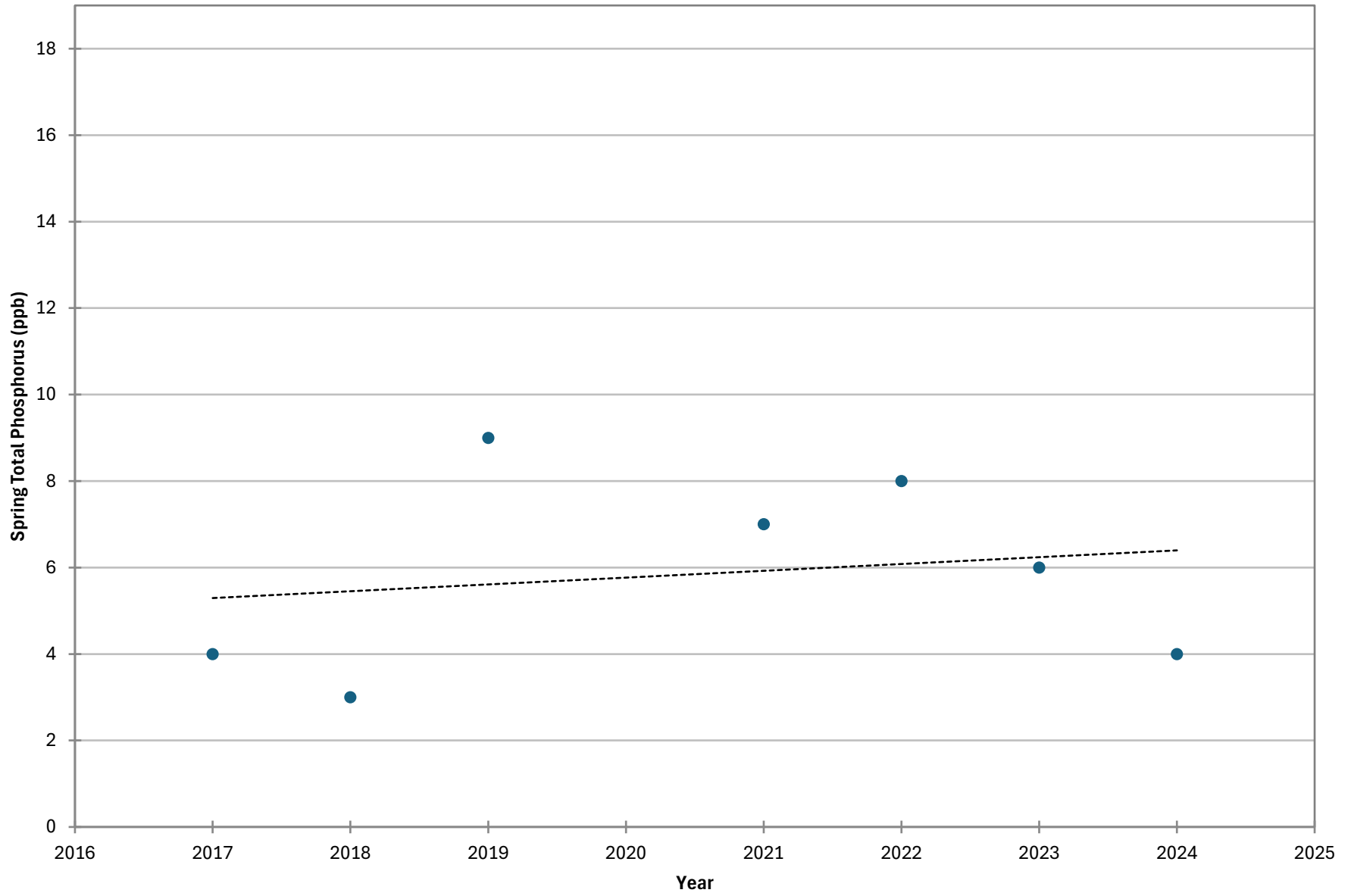
COOPERATIVE LAKES MONITORING PROGRAM
SUMMER MEAN TRANSPARENCY

Second Fortune Lake (Iron Co.), 360177



COOPERATIVE LAKES MONITORING PROGRAM
SPRING TOTAL PHOSPHORUS

Second Fortune Lake (Iron Co.), 360177



COOPERATIVE LAKES MONITORING PROGRAM
SUMMER TOTAL PHOSPHORUS

Second Fortune Lake (Iron Co.), 360177

