



2024 Data Report for

Earl Lake, Livingston County

Site ID: 470554

42.6019°N, 83.8959°W

The CLMP is brought to you by:



Michigan Clean
Water Corps

EGLE

MICHIGAN DEPARTMENT OF
ENVIRONMENT, GREAT LAKES, AND ENERGY

MICHIGAN STATE
UNIVERSITY



Huron
River
Watershed
Council

About this report:

This report is a summary of the data that have been collected through the Cooperative Lakes Monitoring Program. The contents have been customized for your lake. The first page is a summary of the Trophic Status Indicators of your lake (Secchi Disk Transparency, Chlorophyll-a, Spring Total Phosphorus, and Summer Total Phosphorus). Where data are available, they have been summarized for the most recent field season, five years prior to the most recent field season, and since the first year your lake has been enrolled in the program.

If you did not take 8 or more Secchi disk measurements or 4 or more chlorophyll measurements, there will not be summary data calculated for these parameters. These numbers of measurements are required to ensure that the results are indicative of overall summer conditions.

If you enrolled in Dissolved Oxygen/Temperature, the summary page will have a graph of one of the profiles taken during the late summer (typically August or September). If your lake stratifies, we will use a graph showing the earliest time of stratification, because identifying the timing of this condition and the depth at which it occurs is typically the most important use of dissolved oxygen measurements.

The back of the summary page will be an explanation of the Trophic Status Index and where your lake fits on that scale.

The rest of the report will be aquatic plant summaries, Score the Shore results, and larger graphs, including all Dissolved Oxygen/Temperature Profiles that you recorded. For Secchi Disk, Chlorophyll, and Phosphorus parameters, you need to have two years of data for a graph to make logical sense. Therefore if this is the first year you have enrolled in the CLMP, you will not receive a graph for these parameters.

Remember that some lakes see a lot of fluctuation in these parameters from year to year. Until you have eight years worth of data, consider all trends to be preliminary.

To learn more about the CLMP monitoring parameters or get definitions to unknown terms, check out the CLMP Manual, found at: https://micorps.net/wp-content/uploads/2021/03/CLMP-Manual-2019update2_2021.pdf

Thank you!

The CLMP leadership team would like to thank you for all of your efforts over the past year. The CLMP would not exist without dedicated and hardworking volunteers!

The CLMP Leadership Team is made of: Jo Latimore, Erick Elgin, Jean Roth, Tamara Lipsey, Mike Gallagher, Melissa DeSimone, and Paul Steen

Questions?

If you have questions on this report or believe that the tabulated data for your lake in this report are in error please contact:

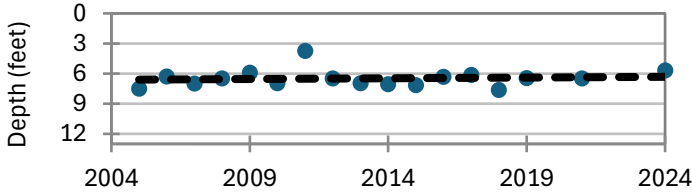
Paul Steen (psteen@hrwc.org), CLMP Data Analyst

Earl Lake, Livingston County 2024 CLMP Results



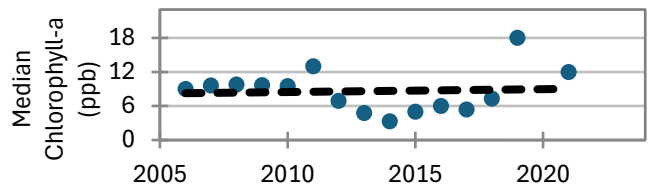
Secchi Disk Transparency (feet)

Year	# Readings	Min	Max	Average	Std. Dev	Carlson TSI
2024	9	4.5	7.0	5.7	1.0	52
2019-2023	36	3.0	12.0	6.5	2.2	50
2005-2018	296	2.0	11.5	6.5	1.5	50
2024 All CLMP Lakes	3348	0.5	85.0	11.7	6.2	43



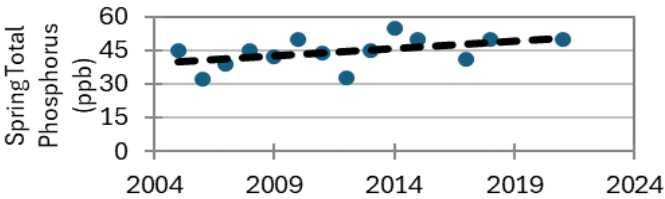
Chlorophyll-a (parts per billion)

Year	# Samples	Min	Max	Median	Std. Dev	Carlson TSI
2021	5	2.3	16.0	12.0	5.7	55
2016-2020	20	<1.0	34.0	6.7	7.8	49
2006-2015	50	1.0	34.0	6.7	8.3	52
2024 All CLMP Lakes	708	< 1.0	63.0	2.8	7.3	41



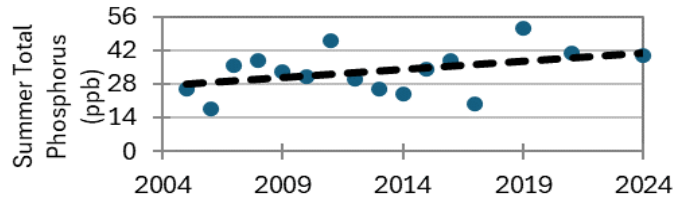
Spring Phosphorus (parts per billion)

Year	# Samples	Min	Max	Average	Std. Dev
2021	1	50.0	50.0	50.0	NA
2016-2020	2	41.0	50.0	45.5	6.4
2005-2015	11	32.0	55.0	43.6	7.0
2024 All CLMP Lakes	259	<= 5	140.0	14.3	39.7

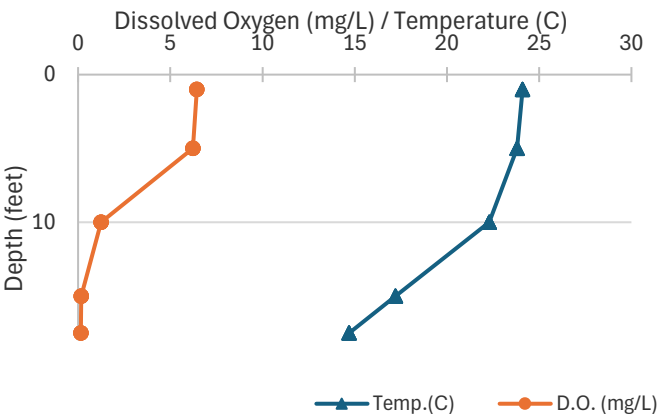


Summer Phosphorus (parts per billion)

Year	# Samples	Min	Max	Average	Std. Dev	Carlson TSI
2024	1	40.0	40.0	40.0	NA	57
2019-2023	2	41.0	51.0	46.0	7.1	59
2005-2018	13	18.0	46.0	30.8	7.9	53
2024 All CLMP Lakes	200	<= 5	4.0	190.0	14.9	18



Dissolved Oxygen and Temperature Profile



7/18/2021

Summary

Average TSI	2024	2019-2023	2005-2018
Earl Lake	55	54	51
All CLMP Lakes	41	42	40

With an average TSI score of 55 based on 2024 Secchi transparency and summer total phosphorus data, this lake is rated as eutrophic.

Due to the high nutrient levels, this lake loses dissolved oxygen in the bottom waters in early summer, prior to the development of a classic thermocline in mid-summer. By mid-summer, the lake has stratified and the deeper waters are devoid of oxygen.

Long term monitoring shows slight upward slopes on all the parameters, indicating a very slow movement toward higher nutrient levels in the lake. Given this lake's eutrophic status, residents should be encouraged to take measures to reduce nutrient input into this lake and continue monitoring efforts to establish trends and track lake health over time.

* = Minimum # samples not met for average/median/TSI value

<1.0 = Chlorophyll-a: Sample value is less than limit of quantification (<1 ppb).

W= Value is less than the detection limit (<3 ppb) T = Value reported is less than the reporting limit (5 ppb)

Trophic Status Index Explained

In 1977, limnologist Dr. Robert Carlson developed a numerical scale (0-100) where the numbers indicate the level of nutrient enrichment. Using the proper equations, we can convert results from Summer Total Phosphorus, Secchi Depth, and Chlorophyll-a to this Trophic Status Index (TSI). The TSI numbers are furthermore grouped into general categories (oligotrophic, mesotrophic, eutrophic, and hypereutrophic), to quickly give us a way to understand the general nutrient level of any lake.

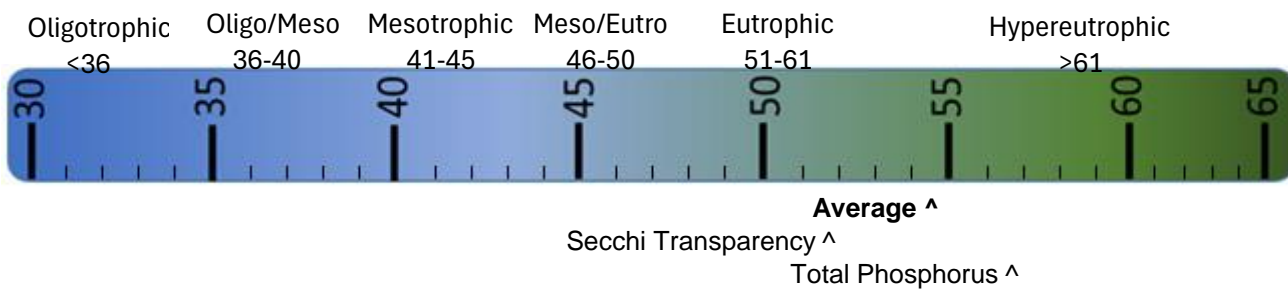
The tables below give the results-to-TSI conversions for the water quality data ranges normally seen in the CLMP. The formulas for this conversion can be found in the CLMP manual (link is on page 2 of this report).

Phosphorus (ppb)	TSI Value
<5	<27
6	30
8	34
10	37
12	40
15	43
18	46
21	48
24	50
32	54
36	56
42	58
48	60
>50	>61

Secchi Depth (ft)	TSI Value
>30	<28
25	31
20	34
15	38
12	42
10	44
7.5	48
6	52
4	57
<3	>61

Chlorophyll-a (ppb)	TSI Value
<1	<31
2	37
3	41
4	44
6	48
8	51
12	55
16	58
22	61
>22	>61

TSI for Earl Lake in 2024	
Average	55
Secchi Disk	52
Summer TP	57
Chlorophyll-a	



Oligotrophic: Generally deep and clear lakes with little aquatic plant or algae growth. These lakes maintain sufficient dissolved oxygen in the cool, deep-bottom waters during late summer to support cold water fish, such as trout and whitefish.

Mesotrophic: Lakes that fall between oligotrophic and eutrophic. Mid-ranged amounts of nutrients.

Eutrophic: Highly productive eutrophic lakes are generally shallow, turbid, and support abundant aquatic plant growth. In deep eutrophic lakes, the cool bottom waters usually contain little or no dissolved oxygen. Therefore, these lakes can only support warm water fish, such as bass and pike.

Hypereutrophic: A specialized category of eutrophic lakes. These lakes exhibit extremely high productivity, such as nuisance algae and weed growth.

Site ID: 470554

Earl Lake, Livingston County 2016 CLMP Aquatic Plant Results



Earl Lake enrolled in the Aquatic Plant Identification and Mapping program in 2016. While a formal survey was not conducted, informal observations were reported:

Invasive Eurasian watermilfoil (or a possible hybrid with native milfoil) and various pondweed species grew aggressively early in the season. Invasive starry stonewort is responding well to treatments.

Visit the MiCorps Data Exchange (www.micorps.net) or contact the lead volunteer on your lake for more details on the monitoring efforts, including sampling locations, maps, and plant abundance information, and for information on past surveys.

Score the Shore

Earl Lake does not have Score the Shore results.

Why is the Score the Shore parameter important?

Healthy shorelines are an important and valuable component of the lake ecosystem. The shoreline area is a transition zone between water and land, and should be a very diverse environment that provides habitat for a great variety of fish, plants, birds, and other animals. A healthy shoreline area is also essential for maintaining water quality, slowing runoff, and limiting erosion.

However, Michigan's inland lake shorelines are threatened. Extensive development, often combined with poor shoreline management practices, can reduce or eliminate natural shoreline habitat and replace it with lawn and artificial erosion control such as sea walls and rock. As a result, shoreline vegetation is dramatically altered, habitat is lost, and water quality declines.

Therefore, in 2019 the MiCorps Cooperative Lakes Monitoring Program introduced a new monitoring program – Score the Shore – that enables volunteers to assess the quality of their lake's shoreline habitat.

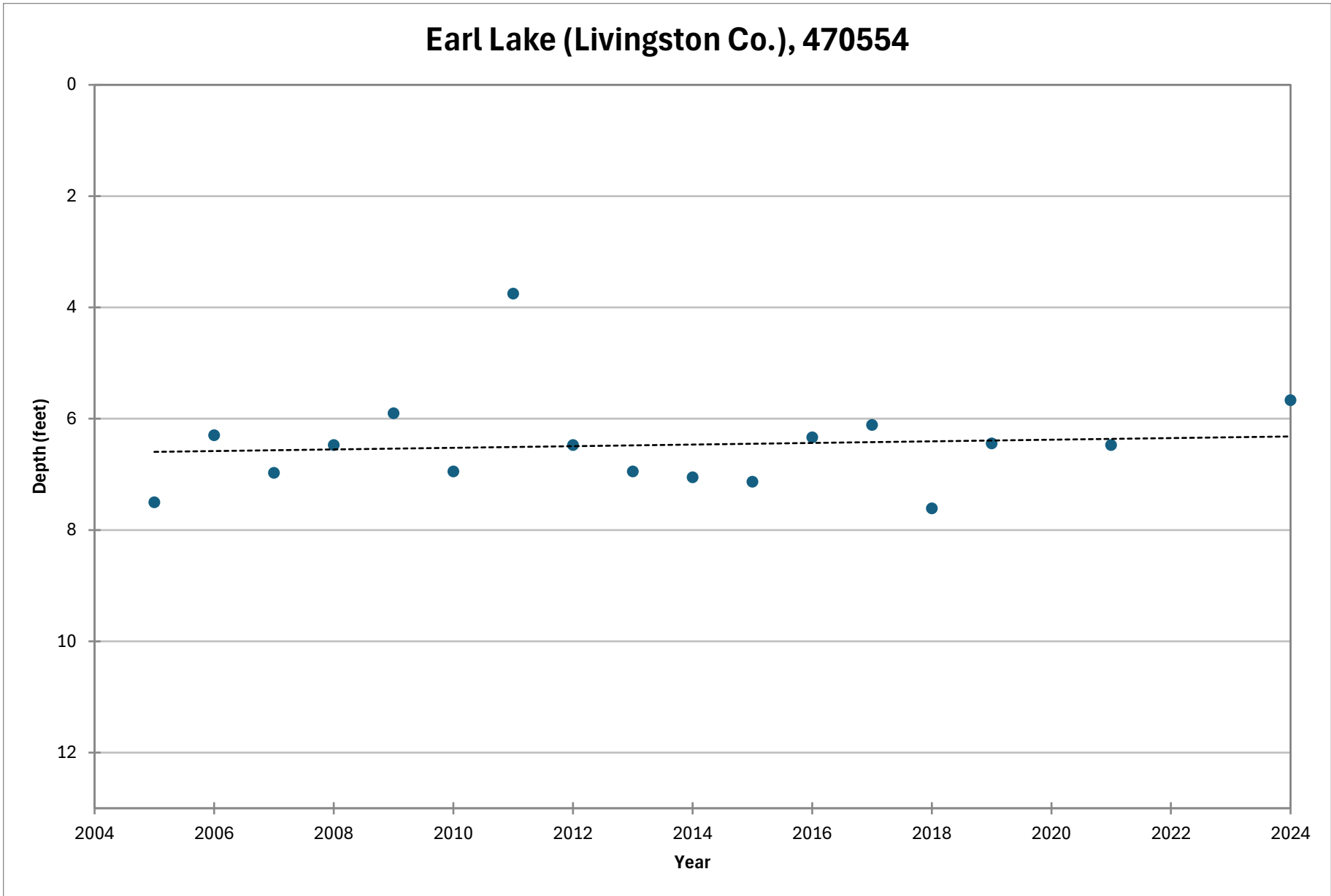
The information gathered during this assessment will allow lake communities to identify high-quality areas that can be protected, as well as opportunities for improvement. Score the Shore data, combined with educational resources describing the value of healthy shorelines and how to restore and maintain them, can be incorporated into lake management planning and used for educating lakefront property owners. The Michigan Natural Shoreline Partnership (MNSP) is a collaboration of agencies and professionals that promotes natural shoreline practices to protect Michigan's inland lakes. The MNSP website (www.mishorelinepartnership.org) includes materials and information that can be used in educational efforts. MNSP also offers training for professional educators and landscape contractors, and maintains a list of trained educators who may be available to speak to your community about natural shorelines.

Score the Shore data, just like all CLMP data, will also be available to any interested parties through the MiCorps Data Exchange (www.micorps.net). State agency staff and researchers regularly access CLMP data to better understand and manage Michigan's inland lakes.

Score the Shore is a descriptive process for assessing shoreline quality on Michigan's inland lakes. It is also a valuable educational tool. Score the Shore is not a regulatory program, nor is it intended to tell people what they can and cannot do on their property. The Michigan Department of Environmental Quality's Inland Lakes and Streams Program has responsibility for shoreline protection on public lakes. To learn about their shoreline protection program, including construction permitting and recommendations for shoreline management, visit www.mi.gov/deqinlandlakes.

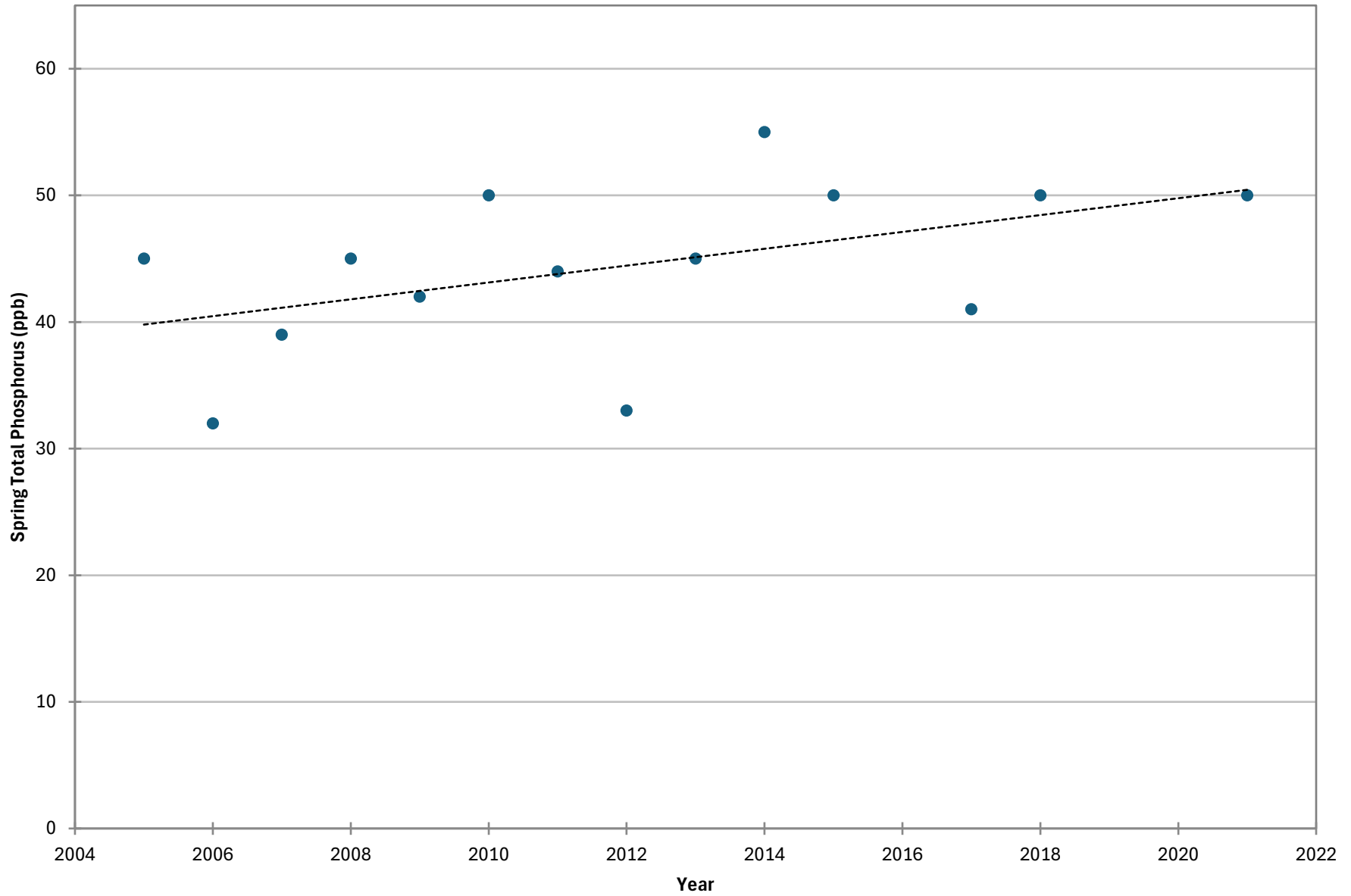
COOPERATIVE LAKES MONITORING PROGRAM
SUMMER MEAN TRANSPARENCY

Earl Lake (Livingston Co.), 470554



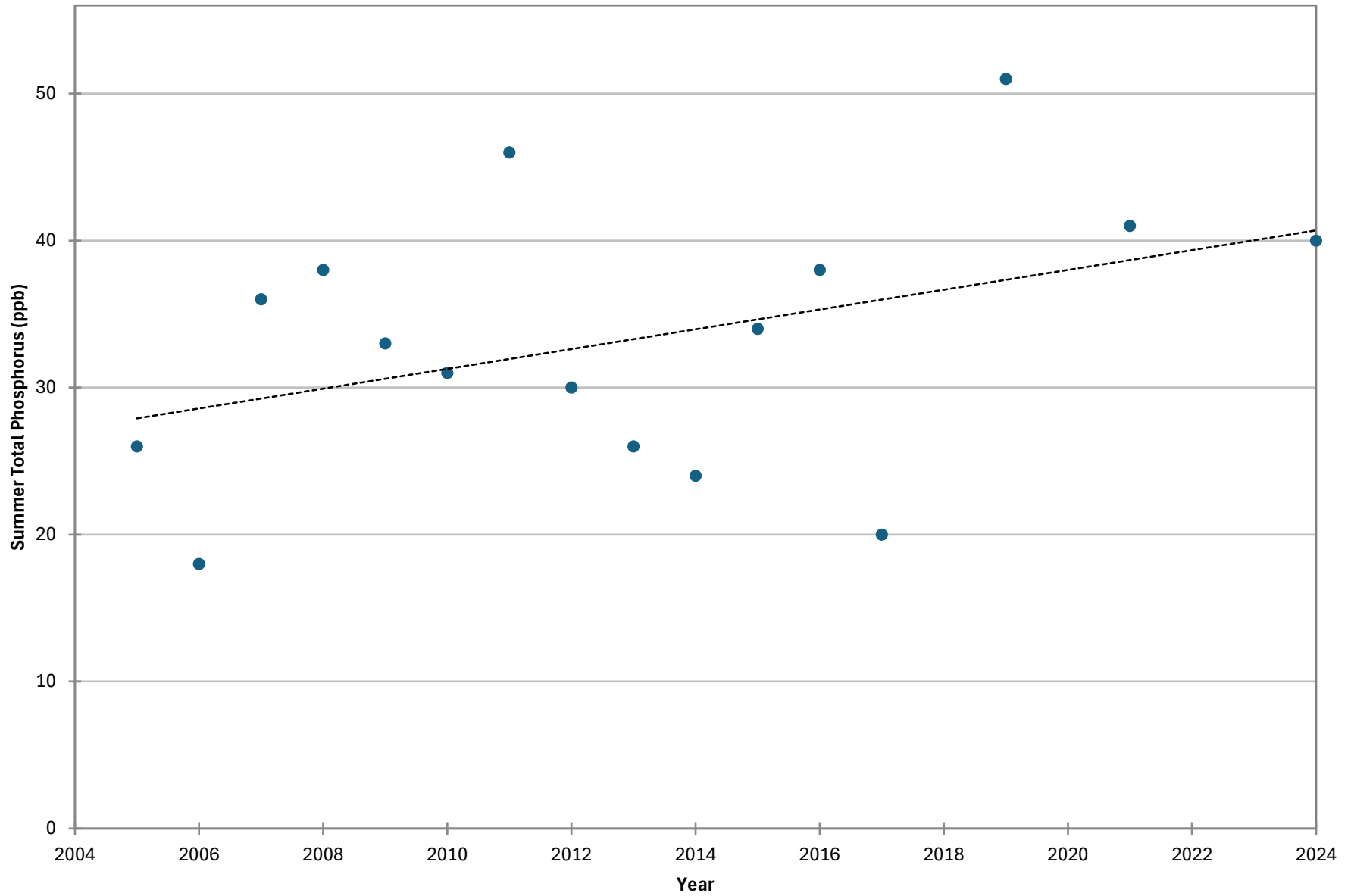
COOPERATIVE LAKES MONITORING PROGRAM
SPRING TOTAL PHOSPHORUS

Earl Lake (Livingston Co.), 470554



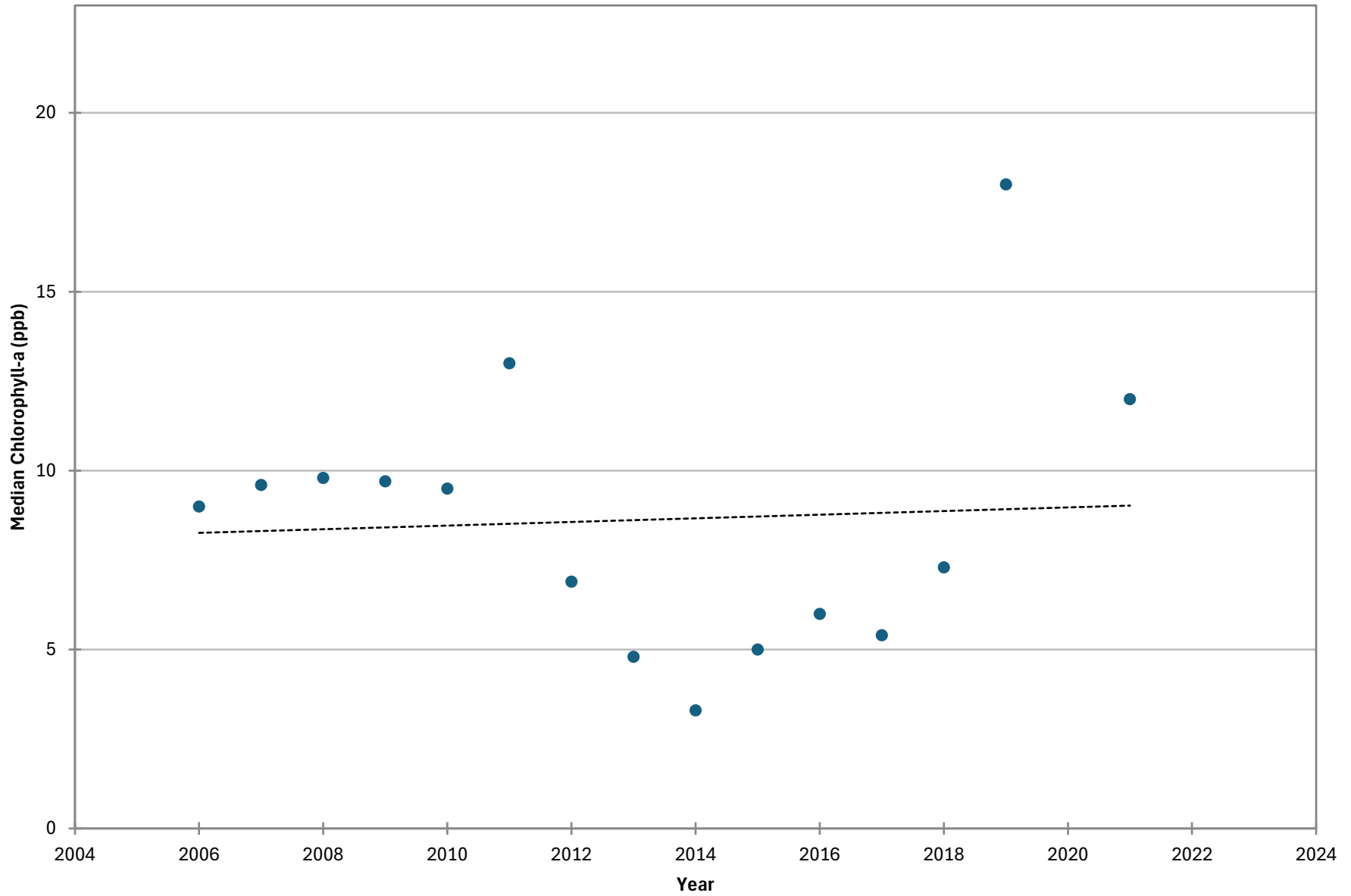
COOPERATIVE LAKES MONITORING PROGRAM
SUMMER TOTAL PHOSPHORUS

Earl Lake (Livingston Co.), 470554



COOPERATIVE LAKES MONITORING PROGRAM
SUMMER MEDIAN CHLOROPHYLL-A

Earl Lake (Livingston Co.), 470554



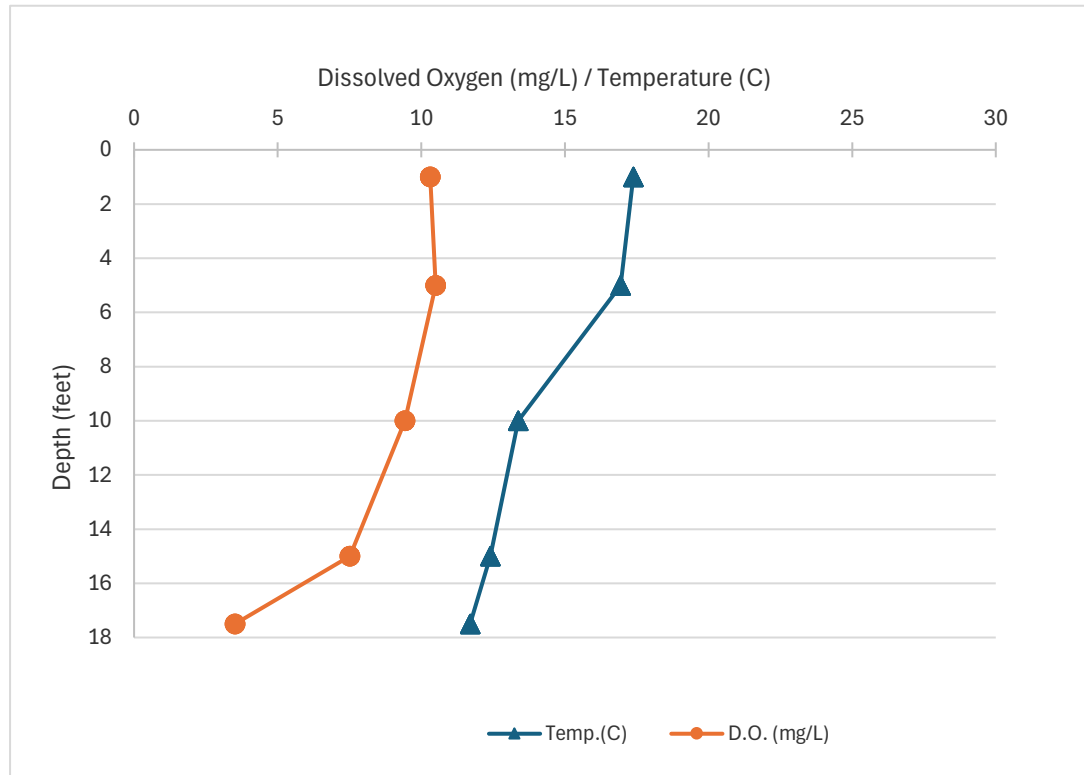
Name: Earl Lake
 County: Livingston
 Site ID: 470554
 Date: 5/17/2021

Dissolved Oxygen and Temperature Profile

Depth (ft)	Temp.(C)	D.O. (mg/L)
1	17.38	10.31
1	17.38	10.31
1	17.38	10.31
1	17.38	10.31
5	16.94	10.5
5	16.94	10.5
5	16.94	10.5
5	16.94	10.5
10	13.38	9.43
10	13.38	9.43
10	13.38	9.43
10	13.38	9.43
15	12.4	7.52
15	12.4	7.52
15	12.4	7.52
15	12.4	7.52
17.5	11.7	3.51
17.5	11.7	3.51
17.5	11.7	3.51
17.5	11.7	3.51

Lake: Earl Lake (Livingston Co.)

5/17/2021



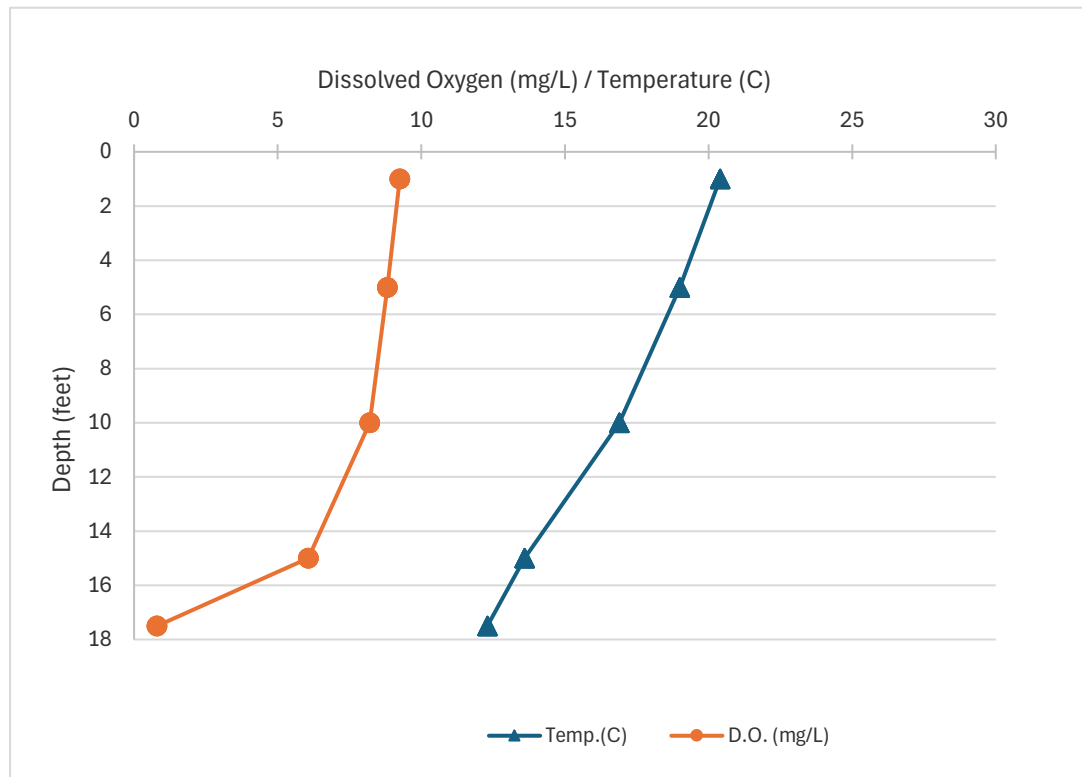
Name: Earl Lake
 County: Livingston
 Site ID: 470554
 Date: 6/1/2021

Dissolved Oxygen and Temperature Profile

Depth (ft)	Temp.(C)	D.O. (mg/L)
1	20.4	9.25
1	20.4	9.25
1	20.4	9.25
1	20.4	9.25
5	19	8.82
5	19	8.82
5	19	8.82
5	19	8.82
10	16.9	8.21
10	16.9	8.21
10	16.9	8.21
10	16.9	8.21
15	13.6	6.07
15	13.6	6.07
15	13.6	6.07
15	13.6	6.07
17.5	12.3	0.8
17.5	12.3	0.8
17.5	12.3	0.8
17.5	12.3	0.8

Lake: Earl Lake (Livingston Co.)

6/1/2021



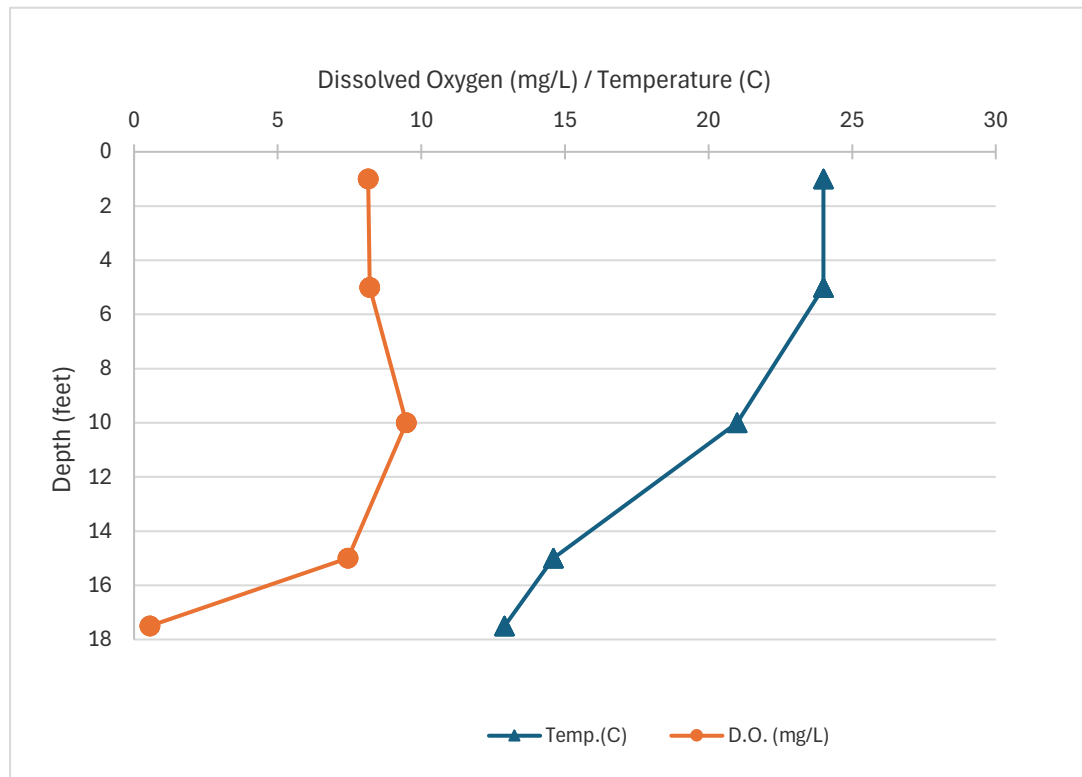
Name: Earl Lake
 County: Livingston
 Site ID: 470554
 Date: 6/17/2021

Dissolved Oxygen and Temperature Profile

Depth (ft)	Temp.(C)	D.O. (mg/L)
1	24	8.15
1	24	8.15
1	24	8.15
1	24	8.15
5	24	8.2
5	24	8.2
5	24	8.2
5	24	8.2
10	21	9.48
10	21	9.48
10	21	9.48
10	21	9.48
15	14.6	7.45
15	14.6	7.45
15	14.6	7.45
15	14.6	7.45
17.5	12.9	0.55
17.5	12.9	0.55
17.5	12.9	0.55
17.5	12.9	0.55

Lake: Earl Lake (Livingston Co.)

6/17/2021



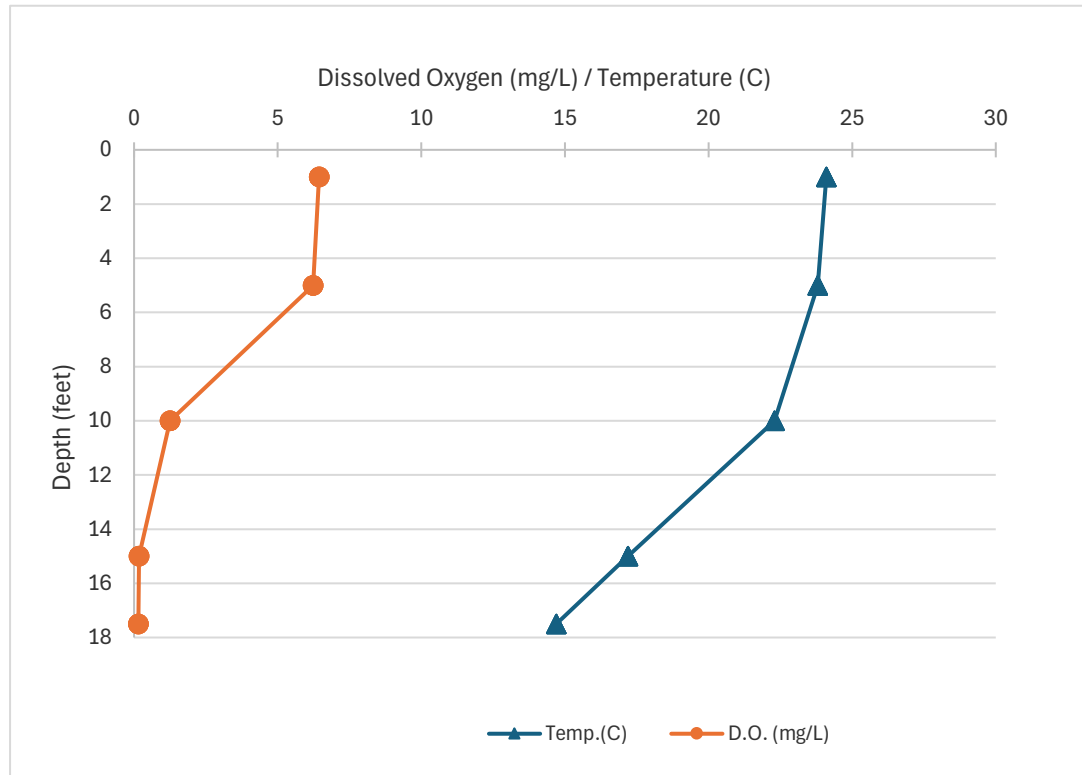
Name: Earl Lake
 County: Livingston
 Site ID: 470554
 Date: 7/18/2021

Dissolved Oxygen and Temperature Profile

Depth (ft)	Temp.(C)	D.O. (mg/L)
1	24.1	6.44
1	24.1	6.44
1	24.1	6.44
1	24.1	6.44
5	23.8	6.23
5	23.8	6.23
5	23.8	6.23
5	23.8	6.23
10	22.3	1.25
10	22.3	1.25
10	22.3	1.25
10	22.3	1.25
15	17.2	0.17
15	17.2	0.17
15	17.2	0.17
15	17.2	0.17
17.5	14.7	0.15
17.5	14.7	0.15
17.5	14.7	0.15
17.5	14.7	0.15

Lake: Earl Lake (Livingston Co.)

7/18/2021



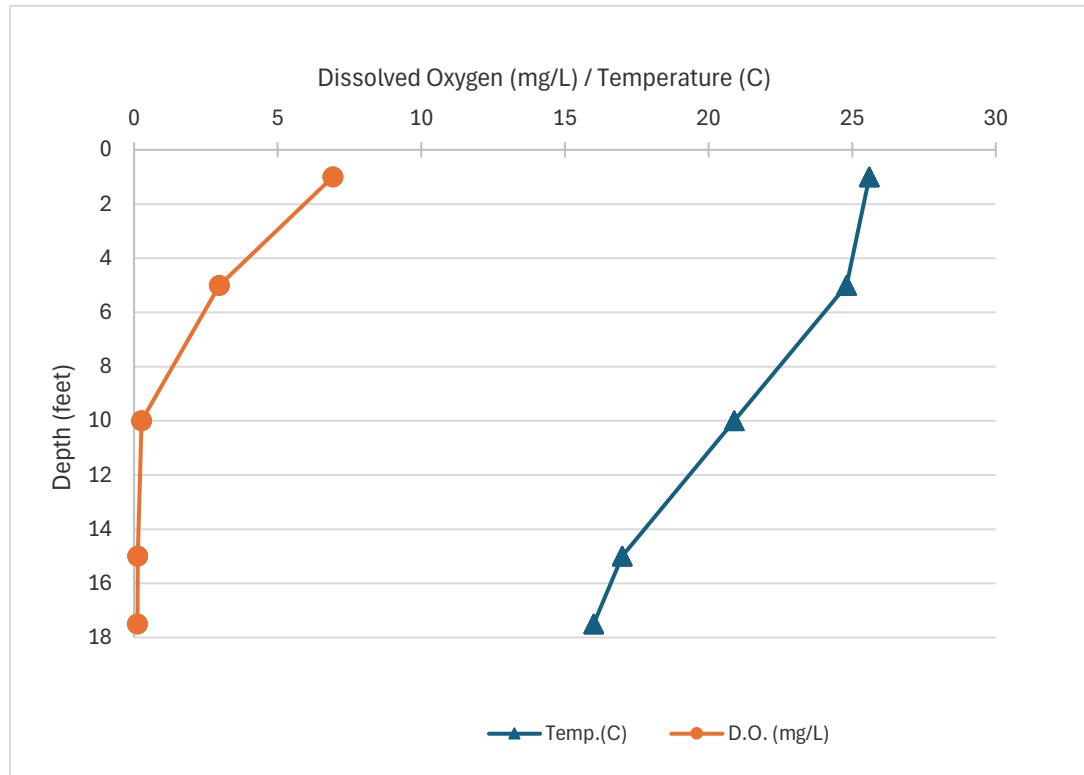
Name: Earl Lake
 County: Livingston
 Site ID: 470554
 Date: 8/18/2021

Dissolved Oxygen and Temperature Profile

Depth (ft)	Temp.(C)	D.O. (mg/L)
1	25.6	6.92
1	25.6	6.92
1	25.6	6.92
1	25.6	6.92
5	24.8	2.97
5	24.8	2.97
5	24.8	2.97
5	24.8	2.97
10	20.9	0.26
10	20.9	0.26
10	20.9	0.26
10	20.9	0.26
15	17	0.13
15	17	0.13
15	17	0.13
15	17	0.13
17.5	16	0.12
17.5	16	0.12
17.5	16	0.12
17.5	16	0.12

Lake: Earl Lake (Livingston Co.)

8/18/2021



Name: Earl Lake
 County: Livingston
 Site ID: 470554
 Date: 9/12/2021

Dissolved Oxygen and Temperature Profile

Depth (ft)	Temp.(C)	D.O. (mg/L)
1	22.4	6
1	22.4	6
1	22.4	6
1	22.4	6
5	21.7	4.4
5	21.7	4.4
5	21.7	4.4
5	21.7	4.4
10	21	1
10	21	1
10	21	1
10	21	1
15	18	0.17
15	18	0.17
15	18	0.17
15	18	0.17
17.5	15.8	0.14
17.5	15.8	0.14
17.5	15.8	0.14
17.5	15.8	0.14

Lake: Earl Lake (Livingston Co.)

9/12/2021

